

New London Community School District

2020-2021 Return to Learn Plan



This is a draft document subject to change. Updated 7/21/20

Outline

ON-SITE

• Students Learning.....	3
• Face Coverings.....	4
• Temperature Screenings.....	5
• Reporting COVID-19 Symptoms/Cases.....	6
• Technology.....	7
• Transportation.....	8
• Arrival/Drop-off Procedures.....	9
• Volunteers/Visitors.....	10
• Meal Times.....	11
• Classroom Structure/Layout.....	12
• Hallways/Passing Times.....	13
• Recess.....	14
• Cleaning of Facilities.....	15
• Signage.....	16

• HYBRID

• Option A: Family Choice Model.....	17
• Option B: District Decision.....	18

• ONLINE

• Exclusive Online Learning.....	19
• Attendance and Technology.....	20
• Questions/Comments.....	21

On-site Student Learning

STUDENTS in grades PreK-12 will return to school **100% on-site** at the start of the 2020-2021 school year. August 18th!

Regular, full days of school will be held with modifications implemented for student and staff safety.



Families that are not comfortable returning to on-site school for COVID related reasons can apply to participate in online learning as part of the Hybrid Option A: Family Choice Model detailed on page 17

Face Coverings

From August 18th – October 2nd (Evaluation Period)

If STUDENTS and STAFF can't social distance then they will be required to wear face coverings.

Face coverings will be required for 4th -12th grades and encouraged for PreK-3 grades.

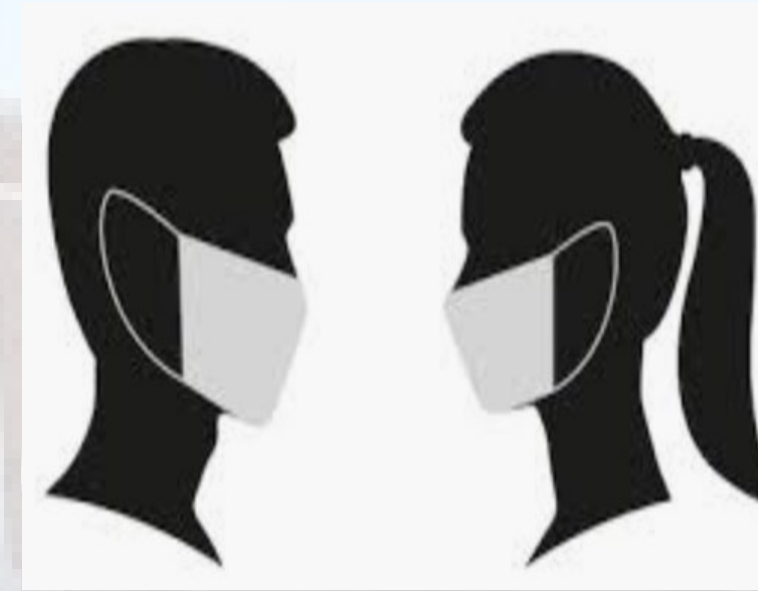
PreK-3, however will need a mask during specific times such i.e. guided reading groups with teacher at kidney bean table.

Students that are unable to wear masks due to medical reasons please contact Superintendent of Schools Chad Wahls at 367-0512 or chad.wahls@nlcsd.org to make arrangements

The district will provide:

Three masks per student including PreK-3 graders

Three masks and one face shield per staff member



New London Community School District
Return to Learn Plan - Decision Making Matrix

0-5%

**(27 Students)
Face to Face Learning**

Follow mitigation strategies outlined in Return to Learn Plan.

Evaluation Period Aug. 18 - Oct. 2

If students and staff can't social distance then they will be required to wear a mask.

Face coverings will be required 4th-12th and encouraged PreK-3rd.

6-7%

**(37 Students)
Face to Face Learning**

Follow mitigation strategies outlined in Return to Learn Plan.

- Face shield and/ or face mask may be required at all times for all grade levels.

8-9%

**(47 Students)
Hybrid Learning
(Half/day Face to Face)**

We will employ our Hybrid Plan.

- Face shield and/ or face mask will be required at all times for all grades.

>10%

**(53 Students)
Continuous On-Line Learning**

Buildings are only open to employees and students needing Wifi access.

- Minimum of 10 school days
- Depending on Positive cases following 10 days we will determine plan of education then.

*Percentages based on active **positive** cases of Covid-19 in New London Community School District's students and staff population.

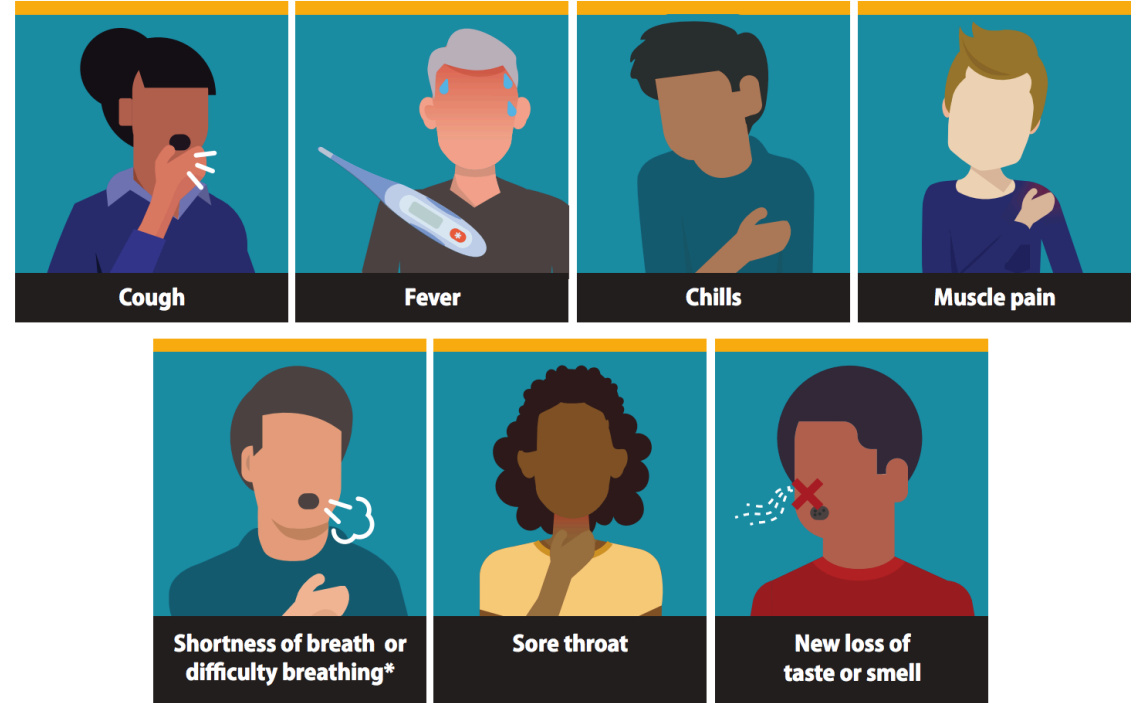
Temperature Screenings

STUDENTS will be required to have their temperatures checked at home by their parent/guardians prior to reporting to school.

Staff will be required to check their temperatures before reporting to work.

Symptoms of Coronavirus (COVID-19)

Know the symptoms of COVID-19, which can include the following:



Reporting of COVID Symptoms/Cases

New London will follow the guidelines from Henry County Public Health in regards to student attendance.

“Students that are identified to have a positive case of COVID-19 will be asked to self-isolate at home for 14 days. Anyone that was within 6 feet of this individual for 15 minutes or longer, will also be recommended to self-isolate at home for 14 days. “Henry County Public Health”

STUDENTS who are exhibiting COVID symptoms or are diagnosed positive must immediately notify our district nurse.

Technology

Every student will be assigned a learning device to help limit the exposure to Covid-19.

K-12 grade students will be assigned a Chromebook

If a student is self-isolated or if school moves to exclusive online learning, students will be able to take these devices home to continue their learning online.

Transportation

All students will have assigned seating and will be required to wear a face covering on the bus. Members of the same family will be able to sit with each other in the same seat if needed.

Buses will be disinfected after each route. Windows and vents will be opened to allow for air circulation whenever possible.

Hand sanitizer stations will be available on all buses.



Arrival/Drop-off Procedures

Parents/Guardians will not be allowed to exit the vehicles during drop-off or pick-up time.

Additional building entrances will be available to limit lines and crowding.

There will be designated drop-off locations for parents/guardians of student walkers.



Volunteers/Visitors

Non-essential visitors will not be allowed in the school buildings at this time.

This includes but not limited to: volunteers, classroom guests, visits by family members, lunch visitors, non-essential business visits. College students that are needing to either student teach or do practicum hours of observation to gain the educational degree will be allowed in our buildings under the same practices of our teachers.

Please note: This also includes if you are a new family in the district, and looking to register your child as a student at New London. Please contact either Brenda Heinold (PK-5 grades) at 319-367-0507 or Kim Wagner (6-12 grades) at 319-367-0500 to walk through online registration.

Meal Times

Students will eat meals in the cafeteria abiding by social distancing guidelines. Additional areas (i.e. outdoor dining, commons or classrooms) may be available to address social distancing if needed.

Meal times will be staggered and self-serve stations will be discontinued.



Classroom Structure/Layout

Classrooms will be restructure to abide by social distancing guidelines as much as possible.

Students will be seated in pods to limit close contact exposure and all couches, bean bags, material chairs, throw cushions, etc., will be removed from the classrooms.



Hallways/Passing Times

During passing time students will be expected to wear their face covering.



Recess

Two grade levels will have recess at a time to accommodate social distancing guidelines. One grade level will be assigned to the playground equipment while the other will be assigned to the black-top or track area.

Students will be required to wash/sanitize their hands upon re-entering the buildings.



Cleaning of Facilities

Increased emphasis will be placed on cleaning and disinfecting schools on a daily and weekly basis.

Additional cleaning and sanitizing procedures will be in place throughout the school year. Examples included: Hand sanitizers, Clorox 360 disinfectant machines, barriers in office spaces, air purifiers, individual disinfectant spray for each room, Covid signage, and drinking fountains turned off for Bottle use only.



Signage

All district buildings will have signs clearly posted regarding handwashing, symptoms, face coverings, and visitors policy.

What is the right way to wash your hands?



1. Wet your hands with clean, running water (warm or cold) and apply soap.



2. Lather your hands by rubbing them together with the soap.



3. Scrub all surfaces of your hands, including the palms, backs, fingers, between your fingers, and under your nails. Keep scrubbing for at least 20 seconds. Need a timer? Hum the "Happy Birthday" song twice.



4. Rinse your hands under clean, running water.



5. Dry your hands using a clean towel or air dry them.

Hybrid Option A: Family Choice Model

Under this hybrid plan, New London schools are open and are offering on-site learning , however, online learning option is available for K-12 grade students that would like to choose an alternative setting.

Meaning, families that are not comfortable returning to on-site school for COVID related reasons can apply to participate in online learning as part of this hybrid model. Since school is open, this online choice option would be classified under our Hybrid learning plan.

New London will provide eligible students with online learning taught by a certified New London teacher through a web camera experience. This means that K-5 students will participate during the entire day with the exception of specials, lunch, and recess times. If you are a 6-12 student you will complete your course assigned work through online learning program offered by the district and monitored by each course subject teacher on APEX learning.

Hybrid Option B: District Decision

If the district needs to reduce the number of students on-site, this Hybrid model may be implemented.

New London Schools will have students in PreK-12 grades attend school on-site learning, however students will be assigned to either an A.M. or P.M. session of school reducing the number of students on-site at one time.

Students would attend school on-site 50% and 50% online.

Please note A.M./P.M. sessions will be developed following registration

Exclusive Online Learning

The determination of whether the district exclusively moves from the **ON-SITE** to the **Hybrid** to the **ONLINE** Learning Plan is made by Governor Kim Reynolds, the Iowa Department of Public Health, and or New London Board of Directors.

Attendance and Technology

Attendance: will be mandatory and recorded.

- **PreK—5th grade students will receive online learning via Google Classroom.**
- **6-12 grade students will receive online learning via Google Classroom or Canvas.**

TECHNOLOGY: Every K-12 Student will be assigned a Chromebook.

Questions/Comments

For questions or comments about the New London Community School District 2020-2021 Return to Learn Plan, please contact Chad Wahls, Superintendent of Schools at chad.wahls@nlcsd.org or 319-367-0512 ext. 1104 leave a message if there is no answer and I will return your call.

